



<https://www.facebook.com/khaleejtimes>

Khaleej Times Facebook allows easy and quick interaction between customers and businesses. It is also easy to respond to customers, which promotes brand loyalty. Quick customer interaction means the client can provide effective customer support by posting a message for its audience.



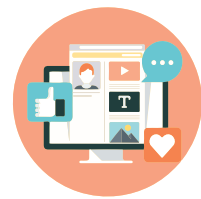
2.8+ million followers



Page Views
150K+ every month



25+ post are done
on everyday basis



Engagement with KT
posts are about 12+
million every month
and counting

Category	Single	Multiple	Super	Slam
Facebook Image Post	4,000	3,200	2,800	2,000
FB live video	24,000	19,200	16,800	12,000
Facebook Video post	7,500	6,000	5,250	3,750

*Single: Any 1 Media Vehicle | Multiple: Any 2 Media Vehicles | Super Any 3 Media Vehicles | Slam 4 or more Media Vehicles
All rates in Net (AED)

khaleejtimes.com



Khaleej Times